

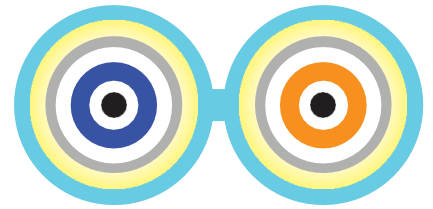
Armoured Simplex & Duplex Assembly Cable

Armoured simplex and duplex patch cord is designed for interconnection and patching applications requiring additional mechanical protection. The cable is designed with a low smoke zero halogen (LSZH) jacket. Tightly packed aramid yarn wrapped around steel armouring provides protection and mechanical strength while maintaining flexibility.

Available in simplex or duplex 2 and 3mm variants, in OM1, OM3, OM4 and Singlemode fibre.

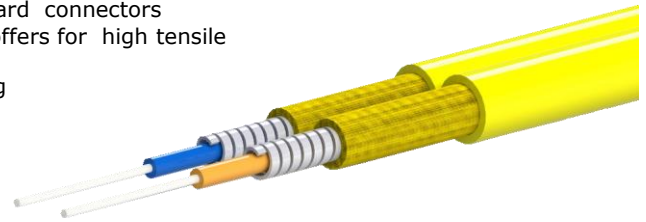
Application

- Optical telecommunication networks
- Fibre patching and interconnection
- Data centre, LAN, SAN and WAN networks
- Harsh environment fibre networks
- Industrial and utilities networks



Features

- Fire resistant low smoke, zero halogen outer jacket design is perfectly suited to confined spaces
- OM1, OM3, OM4 & G652.D singlemode fibre available in a range of jacket colours
- Ideal for use in dense patching environments
- 600um buffered fibre can be direct-terminated with standard connectors
- Tightly packed aramid yarn and steel armouring in cable offers for high tensile strength and excellent mechanical characteristics
- Excellent crush resistance due to encircled steel armouring
- Wide operating temperature range of -40°C to +85°C
- 1 and 2 fibre construction



Fibre Performance

Fibre type	OM1	OM3	OM4	SM (G652.D)
Attenuation at 850nm (db/km)	≤35	≤30	≤30	n/a
Attenuation at 1300/1310nm (db/km)	≤15	≤15	≤15	≤0.40
Attenuation at 1550nm (db/km)	n/a	n/a	n/a	≤0.30
Bandwidth at 850nm [1300nm] (MHz.km)	≥200 [≥500]	≥1500 [≥500]	≥3500 [≥500]	n/a

Technical Specifications

Temperature Range (°C)	Operating: -40 to +85 Storage: -40 to +85 Installation: 0 to +60	(IEC 60794-1-2-F1)
Cable bend radius	See table below	(IEC 60794-1-2-E11A)
Max tensile force (N)	See table below	(IEC 60794-1-2-E1)
Crush resistance (N/100mm)	3000	(IEC 60794-1-2-E3)

Change in cable attenuation <0.2 dB

Fibre Count	Nominal diameter (mm)	Weight (kg/km)	Maximum tensile load short term (N)	Maximum tensile load long term (N)	Min. bend radius installation (cm)	Min. bend radius operation (cm)
2mm Jacket						
1	1.85	13.0	100	100	2.9	1.9
2	1.85 x 4.0	26.0	200	200	2.9	1.9
3mm Jacket						
1	2.85	19.0	400	200	4.0	2.9
2	2.85 x 5.8	38.0	800	400	4.0	2.9