

Fibre Patchcords & Pigtails

Atg provides a broad selection of standard patchcords for your special patching need.

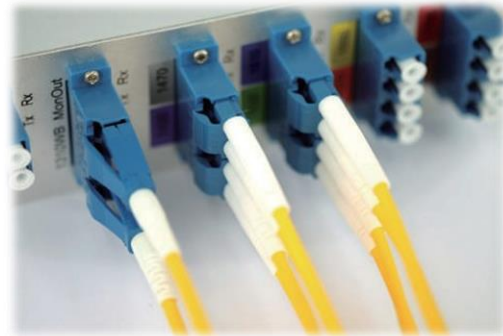
Our production line equips with state of the art manufacturing facilities and sophisticated testing equipment. Our connectors feature durable construction to ensure reliable mating time after time.

Only premium grade zirconia ferrules are selected for our connectors which feature ultra low concentricity; this ensures the finished patchcords have consistent lowest optical loss performance at your critical network.

Together with our stringent quality management, we guarantee our patchcords meet or exceed industrial standard in terms of both optically and mechanically, which ensure your piece of mind patching installation.

Features

- Low insertion loss with consistent performance 100% tested on IL and RL
- Easy identification by broad range of housing and boot colour
- Telcordia GR-326 compliant
- OS1, OS2, G657A1, G657A2, OM1(62.5/125), OM2(50/125), OM3 and OM4 fibers available
- Zirconia ferrule with high concentricity
- Cable Packaging: 900 µm, 2 mm or 3 mm
- Cable outer jacket available in Riser (OFNR) and Low Smoke Zero Halogen (LSZH), Plenum (OFNP) Fast and trustful product delivery system
- Comply to TIA / EIA 568C-3 and ISO / IEC 11801



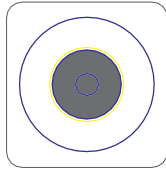
Specifications

Model	Standard Connector *			E2000 Connector series		
Connector type *	Singlemode		Multimode	Singlemode		Multimode
	UPC	APC	PC	UPC	APC	PC
Insertion loss (dB)	< 0.3			< 0.4		
Return loss (dB)	>50	> 65	>25	>50	> 85	>40
Core/Cladding size	9/125µm		50/125µm or 62.5/125µm	9/125µm		50/125µm or 62.5/125µm
Cable count	Simplex or Duplex					
Cable Type	33 - 3mm twin cable					
Jacket type	PVC or LSZH					
Jacket Diameter	900µm, 2mm or 3mm			2mm or 3mm		
Operating temperature	-40 ~ +85 °C			-25 ~ +70 °C		

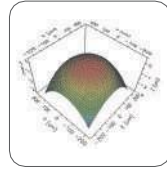
* Includes FC, SC, ST, LC, MU, FDDI, ESCON connectors

Optional LSZH Patchcord Fire Performances			
Flame retardant IEC 60332-1	Fire retardant IEC 60332-3	Low smoke opacity IEC 61034-1/2	Halogen free IEC 60754-1/2

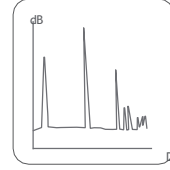
100% atg Assurance



Connector Surface Inspection

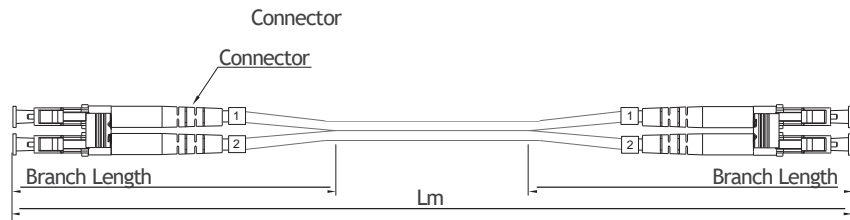
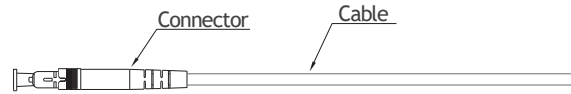
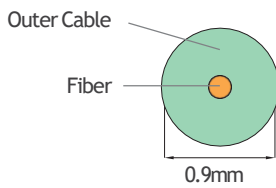


Geometric Inspection

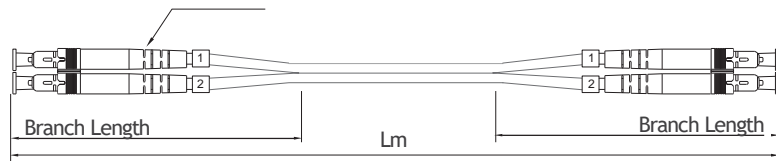
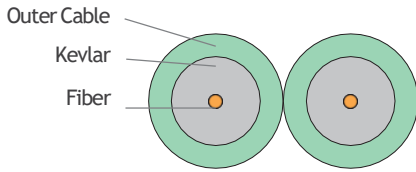


Optical Inspection

0.9mm Simplex Type



Duplex Type



1.8mm to 3.0mm Simplex Type

