

Pre-terminated Patchcable Assembly Specifications

Pre-terminated Fibre Optic Patchcables

atg provides a broad selection of pre-terminated patchcable options for your special patching need. Preterminated cable is ideal for saving the splicing space and instant installation of networks. Distribution cable, breakout cable, outdoor cable and ribbon cable are all available. A pulling eye at each ends is optional.

Our production lines are equipped with state of the art manufacturing facilities as well as sophisticated testing equipment.

Our connectors feature durable construction to ensure reliable mating time after time. Only premium grade zirconia ferrules are being used for our connectors which feature ultra low concentricity; this ensures the finished patchcables have consistent low optical loss when mated with other connectors.

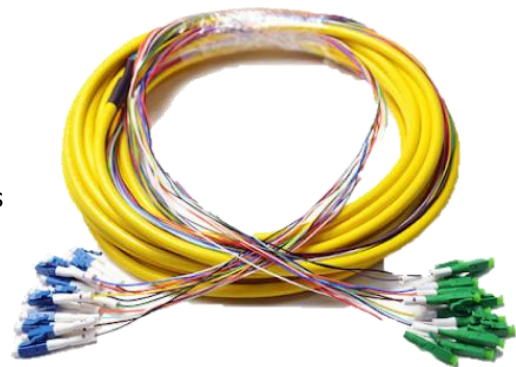
Together with our stringent quality management, we guarantee our patchcables meet or exceed industrial standards both optically and mechanically. All to ensure your piece of mind patching installation.

Features

- Low insertion loss with consistent performance
- 100% tested on IL and RL
- Indoor distribution cable, breakout cable, outdoor armoured breakout cable and ribbon cable
- Fanout 900um, 2.0mm and 3.0mm tubing
- Telcordia GR-326 compatible
- OS1, OS2, G657A1, G657A2, OM1(62.5/125), OM2(50/125), OM3 and OM4 fibres available
- Zirconia ferrule with high concentricity
- Cable outer jacket available in Riser (OFNR) and Low Smoke Zero Halogen (LSZH), Plenum (OFNP) Fast and trustful product delivery system.

Applications

- Data Centre, SAN & Enterprise networks
- Campus & site networks
- Remote locations including mine sites & drilling fields
- Dangerous environments where splicing equipment is restricted
- Installations requiring rapid turnaround
- Plug and play networks

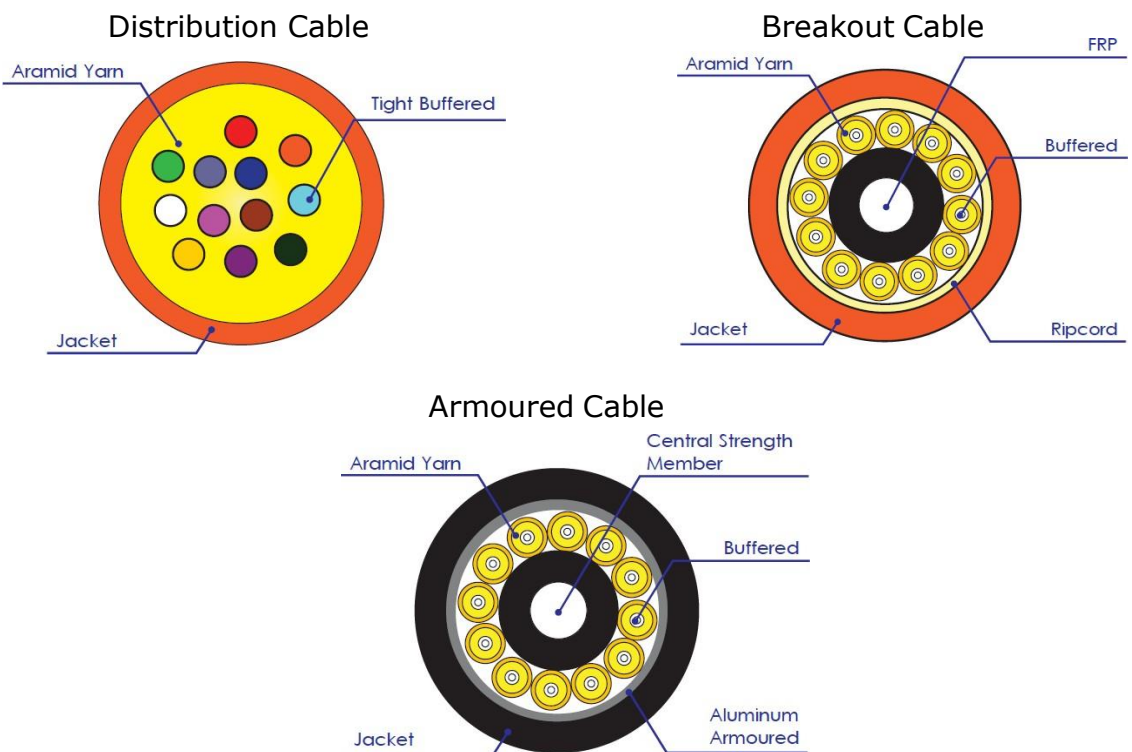


Please contact atg for more detail and delivery times

Specifications

Model	Standard Connector ⁱ		
	Singlemode		Multimode
Connector Type ⁱⁱ	UPC	APC	PC
Insertion loss (dB)	< 0.25		< 0.3
Return loss (dB)	> 50	> 65	> 25
Core / Cladding size	9/125µm		50/125µm or 62.5/125µm
Jacket type	Low Smoke Zero Halogen (LSZH)		
Jacket Diameter	900µm, 2mm or 3mm		
Operating Temperature	-40 ~ +85 °C		
i. Singlemode Connectors are a product of SENKO Advanced Components			
ii. Includes FC, SC, ST, LC, MU, FDDI, ESCON connectors			
Optional LSZH Patchcord Fire Performances			
Flame retardant	Fire retardant	Low smoke opacity	Halogen free
	IEC 60332-3	IEC 1034-1/2	IEC 60754-1/2

Cable Types



Please contact atg for more detail and delivery times