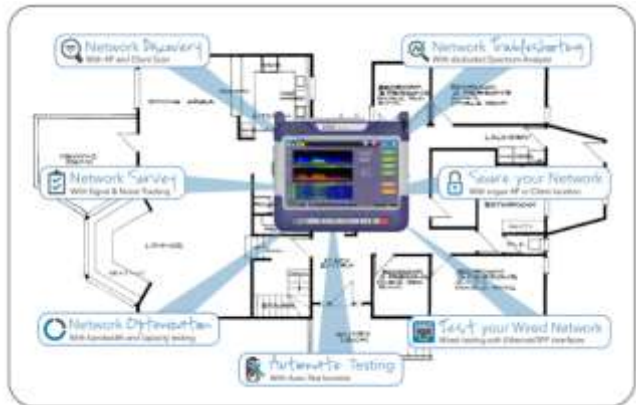


## WiFi Air Expert Test Set – ATG – WX150+

The WX150 test set is all in a compact standalone form factor. Perfect for site surveys, the lightweight WX150 supports standby and instant wake-up operations. It also features eight hours of continuous operation on a full battery charge.

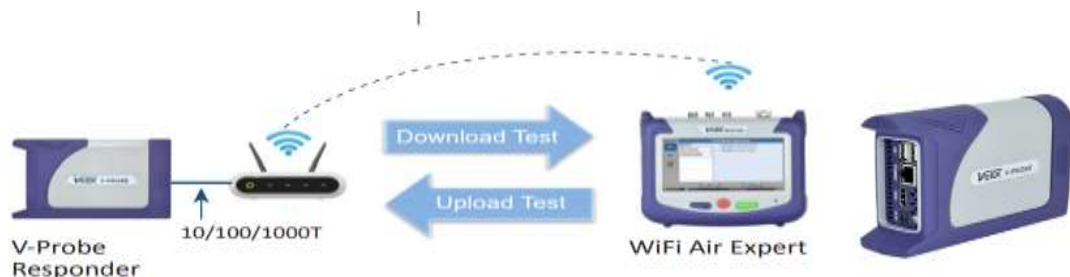


• Wireless Standards: 802.11 ax/ac/b/g/h

- MIMO channels: 2 2:2
- WiFi security standards :WEP,WPA/WPA2 personal, WPA/WPA2 Enterprise, Splash page/Captive portal webpage login
- PoE Testing: Emulation of Powered Device, Detect pairs used, PoE voltage measurement

- Optional Wi-Fi Spectrum Analyzer :Frequency Range: 2.400 to 2.495 GHz and 5.150 to 5.850 GHz with 2dBi/2.5dBi Omnidirectional Antenna (software included)
- Optional 802.3 Ethernet test ports (Optional): RJ45 10/100/1000Base-T, SFP 100-FX/1000Base-X and Ookla Speed test and V-PERF TCP/UDP Throughput Performance Suite and Power Over Ethernet Detection
- Optional Wi-Fi and Bluetooth for Remote Control and File Transfer

The V-Probe Responder is a companion for the MTTplus-900 and WX150 WiFi Air Expert Modules to verify TCP and UDP throughput performance through a Wi-Fi Access Point or Router.



- V-Perf TCP/UDP Responder/Server (compatible iPerf3)
- 10/100/1000Base-T support
- Measure the true Quality of Experience (QoE) on the Wi-Fi network across the AP/Router
- Ready to use on boot-up
- Easy V-Probe discovery by a Wi-Fi Air Expert module for quick test initiation

**For greater information contact [info@atgltd.co.nz](mailto:info@atgltd.co.nz)**